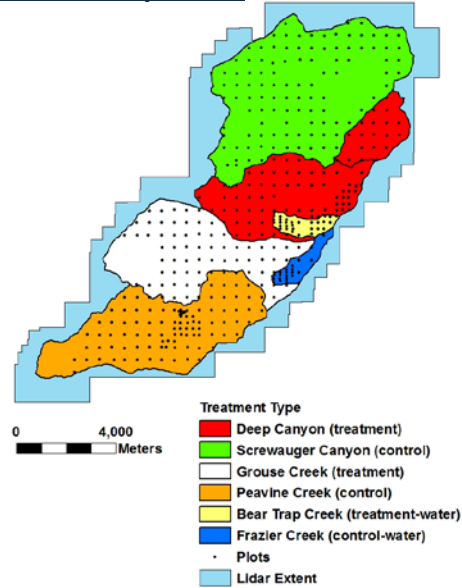


Last Chance Study Site

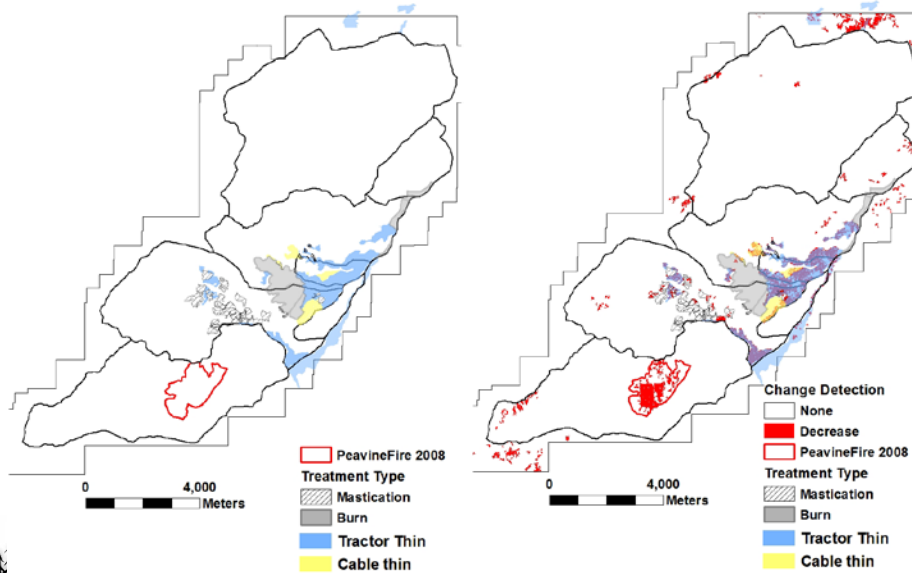
- Forest Inventory
 - Pretreatment 2007/08: 408 plots
 - Post-treatment 2013: 369 plots
 - 34 plots in Peavine Fire
- Lidar Flight
 - Pre: Sept. 2008
 - Post: Oct. 2012/2013



Sierra Nevada Adaptive Management Project

snamp.cnr.berkeley.edu

Last Chance



Sierra Nevada Adaptive Management Project

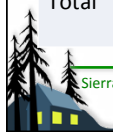
snamp.cnr.berkeley.edu

Last Chance

- Treated Plots
 - Mastication: 5 plots
 - Thinning: 34 plots
 - Cable: 2
 - Tractor: 32
 - Prescribed fire: 10

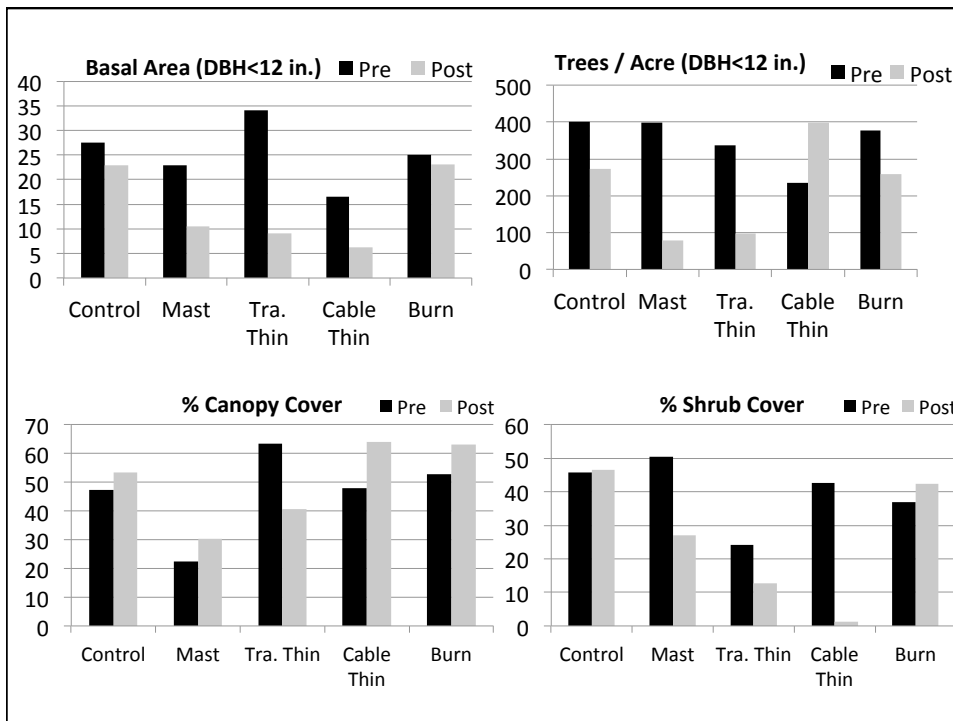


	Mastication	Tractor Thin	Cable Thin	Burn	Total
Deep Canyon	14 ac (0.3%)	277.3 ac (5.2%)	57.2 ac (1.1%)	350 ac (6.6%)	698.5 ac (13%)
Grouse Creek	333.6 ac (6.3%)	337.2 ac (6.4%)	103.6 ac (2.0%)	226.8 ac (4.3%)	1001.2 ac (19%)
Bear Trap	-	300 ac (70.6%)	32.5 ac (7.6%)	-	332.5 ac (78.1%)
Total	347.6 ac	914.5 ac	193.3 ac	576.8 ac	2032.0 ac (18.4%)



Sierra Nevada Adaptive Management Project

snamp.cnr.berkeley.edu



Fire Behavior to Fire Effects

- Simulate under severe fire conditions using Farsite
 - Flame lengths, % crowning for each stand polygon
- Forest Vegetation Simulator
 - Simulate effects, modifying structure for each stand polygon
 - 30 years of forest growth

