

SNAMP Public Participation Logic Model

By Shasta Ferranto, Shufei Lei, and Maggi Kelly

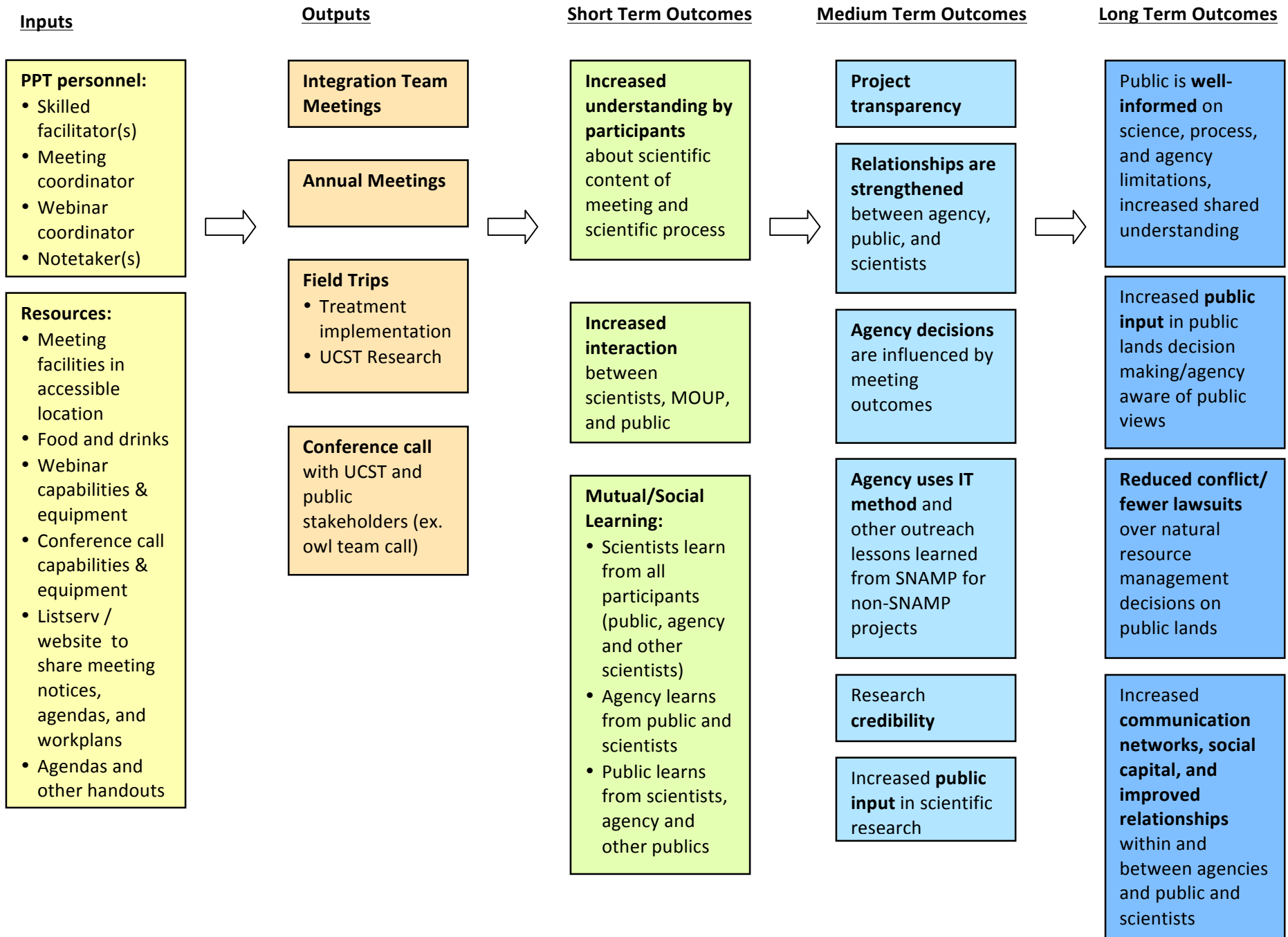
This is a conceptual model of SNAMPs public participation strategy. The document describes the rationale behind SNAMPs Public Participation Team workplan and the achieved or desired outcomes of our participatory approaches.

The purpose of this model is to communicate the underlying assumptions and hypotheses about SNAMPs participation efforts, and to outline testable hypotheses that will be used to evaluate SNAMPs participatory approach. This type of evaluation is necessary to inform and improve future public participation efforts.

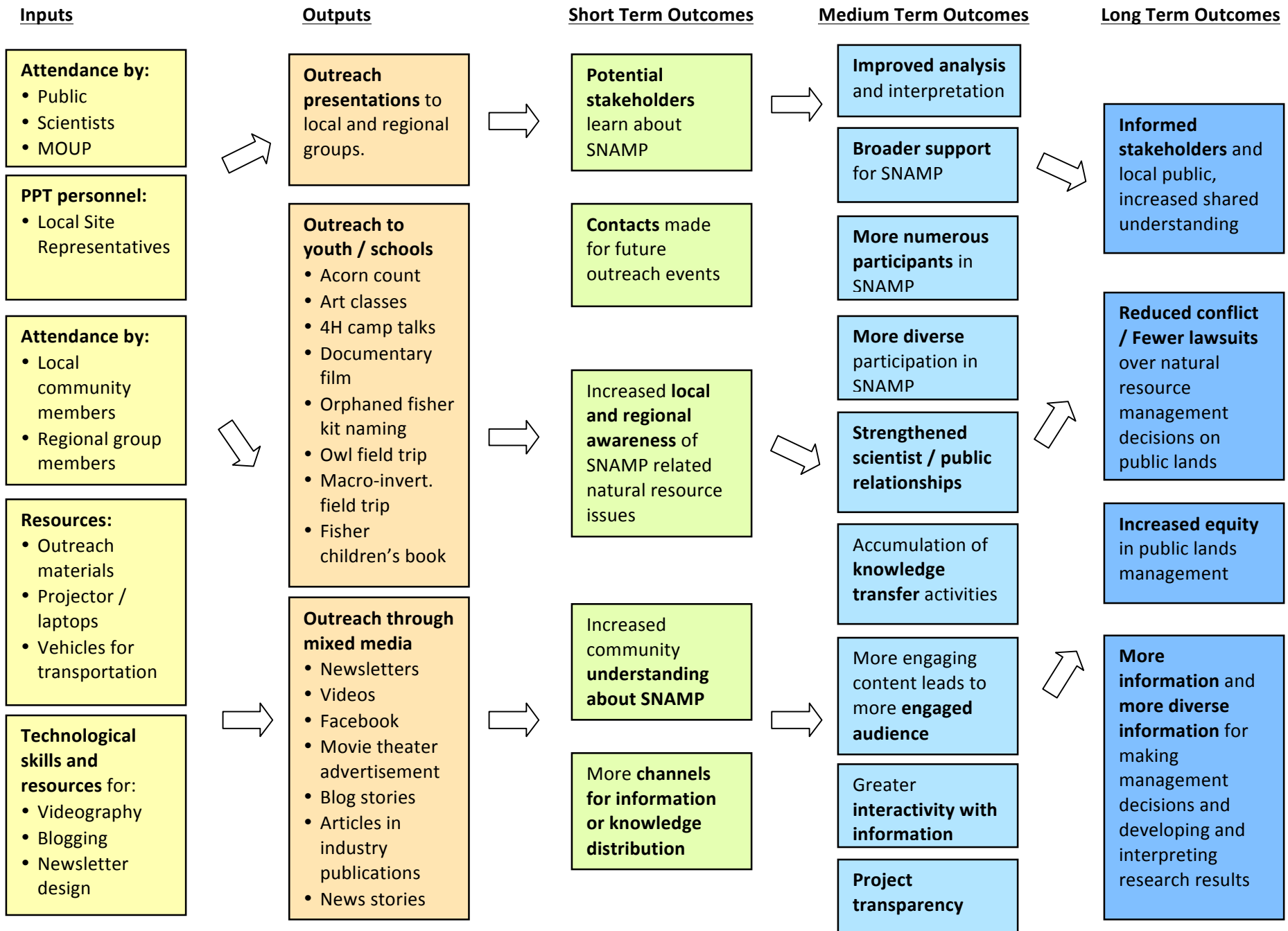
Below are definitions of the categories used in this model.

Category	Definition
Inputs	resources or conditions necessary to achieve each output (for example, employees or equipment)
Outputs	events or products used to promote public participation in SNAMP
Short term outcomes	immediate outcomes from a single event or product
Medium term outcomes	outcomes that result from several events or products
Long term outcomes	desired outcomes at the end of the project

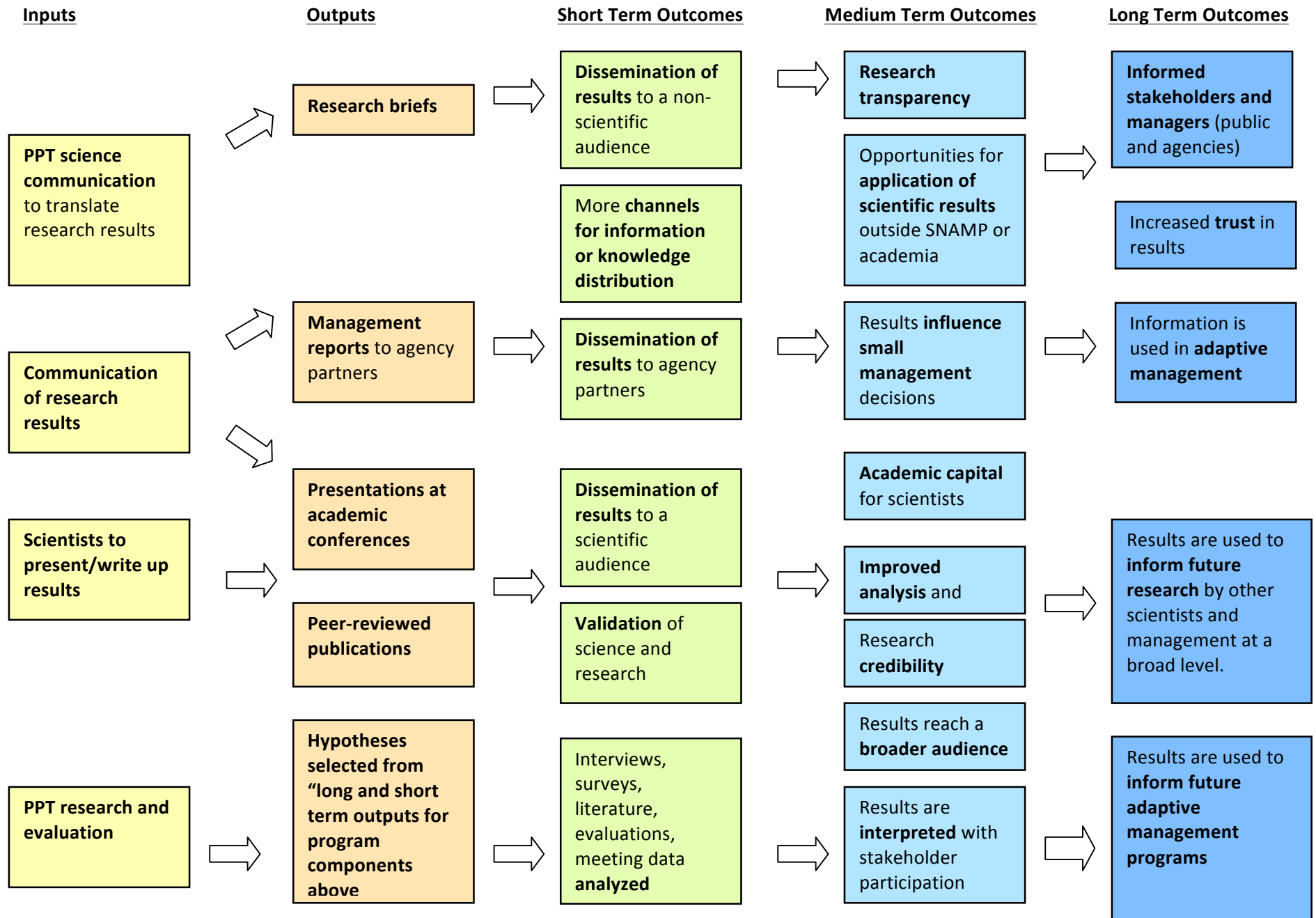
MEETINGS & EVENTS



REGIONAL & LOCAL OUTREACH



RESEARCH



WEBSITE

