

## Lunch - Provided

After Lunch:

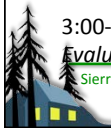
1:00-1:15pm *MOU Partner funding update*

1:15-2:00pm *SNAMP future scenarios depending on funding and treatment implementation*

2:00-2:15pm Break

2:15-3:00pm *Open Discussion*

3:00-3:30pm *Next steps/  
Evaluation*



Sierra Nevada Adaptive Management Project

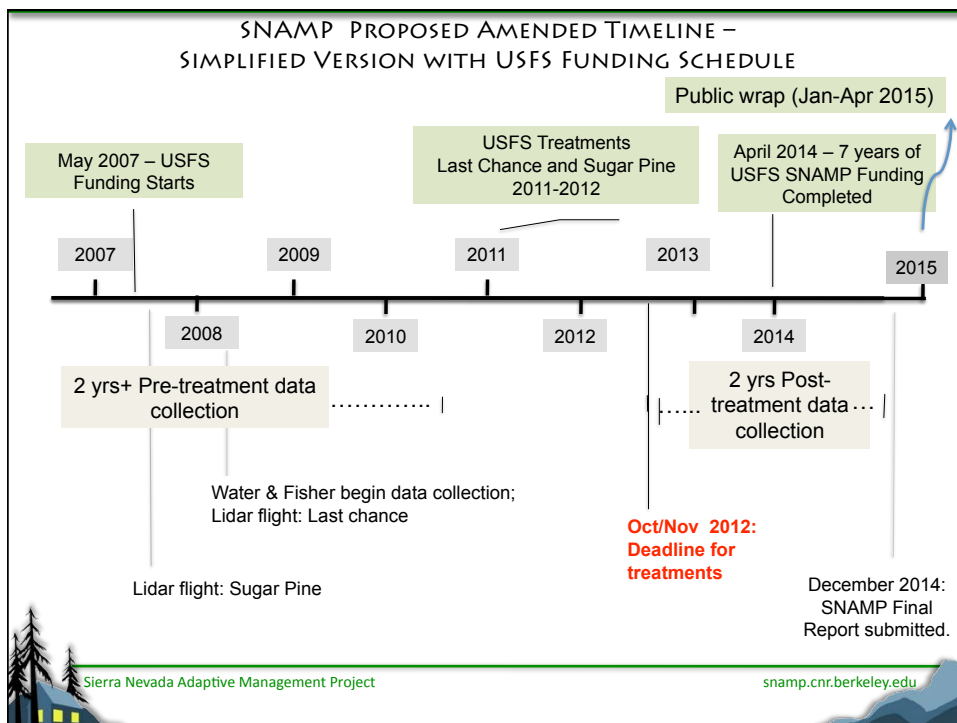
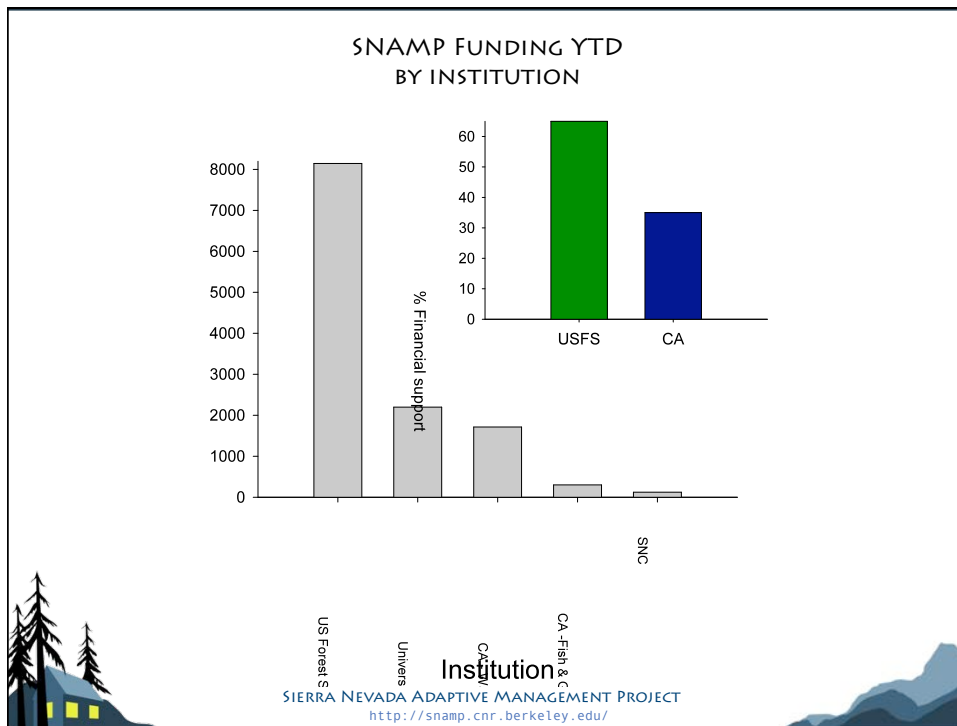
[snamp.cnr.berkeley.edu](http://snamp.cnr.berkeley.edu)

# MOU Partner funding update



Sierra Nevada Adaptive Management Project

[snamp.cnr.berkeley.edu](http://snamp.cnr.berkeley.edu)



**SNAMP scenarios****#1: Continuation of 2010 funding and timeline**

- 100% budget: approximately \$1.8M/year  
USFS: ~\$1.5M ; DWR: \$300K
- Following completed SPLAT treatments: 1 year ecosystem recovery ; 2 years post-treatment data collection
- SNAMP finishes in 2015 or later, depending on when treatments completed.

*Note: this scenario included only for purposes of comparison; federal and state agency financial situations preclude this scenario*

**SNAMP scenarios****#2: Current 2011 funding and timeline**

- 86% budget: 14% cut from USFS; assume full or nearly full funding by DWR  
USFS: \$1.1M ; DWR: \$300K
- Following completed SPLAT treatments, no ecosystem recovery year ; 1-2 years post-treatment data collection, depending on when treatments completed
- SNAMP finishes in December 2014, regardless of when treatments are completed, with 3 months of public meetings to close the project

**SNAMP scenarios**

**#3: 14% cut from USFS; no funding from DWR**

3 options under this scenario:

Option 1 – Close-out SNAMP by December 2012

Option 2 – Focus on Last Chance site; finish in 2014

Option 3 – Continue at both sites until 2014, redistribute available USFS funding

*All 3 options are contingent on USFS permitting SNAMP workplan changes and reallocation of budgets*

**SNAMP scenarios**

**#3: 14% cut from USFS; no funding from DWR**

**Option 1 – Close-out SNAMP by December 2012**

- Budget - USFS: \$1.1M ; reallocation of team budgets to support Spatial and Water, currently funded by DWR
- Analyze data collected up to summer 2012. Summarize science and management insights as best we can
- Submit final report by December 2012: will include very limited post-treatment data collection, most of which is only 0-1 year post-treatment
- No substantial advance toward closing adaptive management loop

**SNAMP scenarios**

#3: 14% cut from USFS; no funding from DWR

Option 2 – Focus on Last Chance site; finish in 2014

- Budget - USFS: \$1.1M ; savings from focusing on a single site reallocated to support Spatial and Water. Goal is to meet original SNAMP project goals for at least one site
- All teams but Fisher focus entire efforts on Last Chance, which will likely complete most SPLAT treatments by fall 2012, allowing for 2 years of post-treatment data collection
- Only Fisher continues data collection in Sugar Pine, possibly with limited post-treatment data collection
- SNAMP finishes in December 2014, regardless of treatment completion

**SNAMP scenarios**

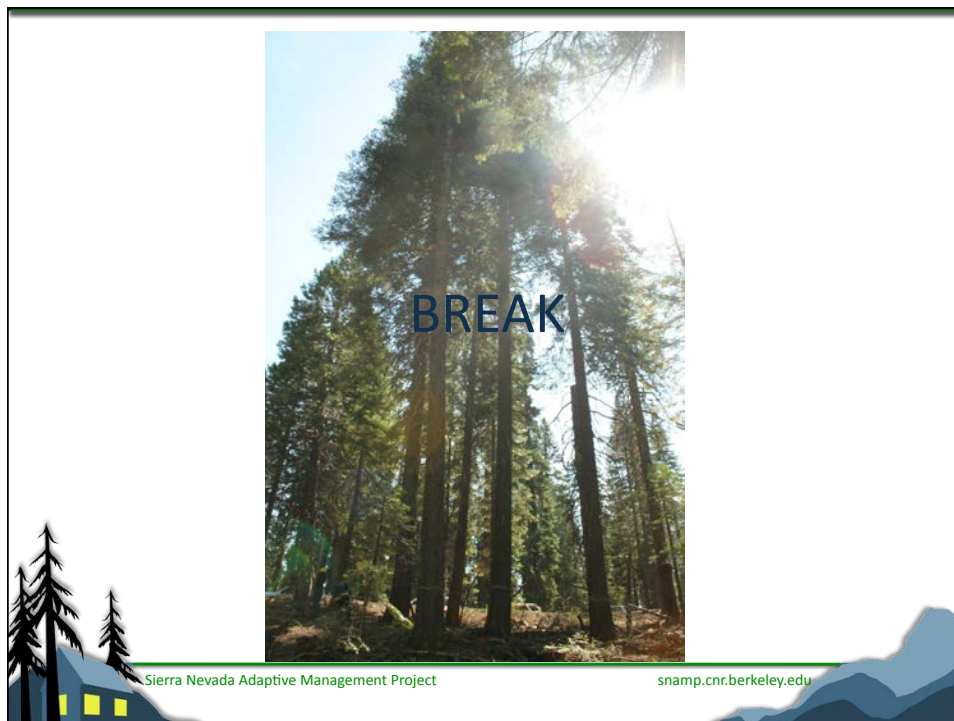
#3: 14% cut from USFS; no funding from DWR

Option 3 – Continue at both sites until 2014, redistribute available USFS funding

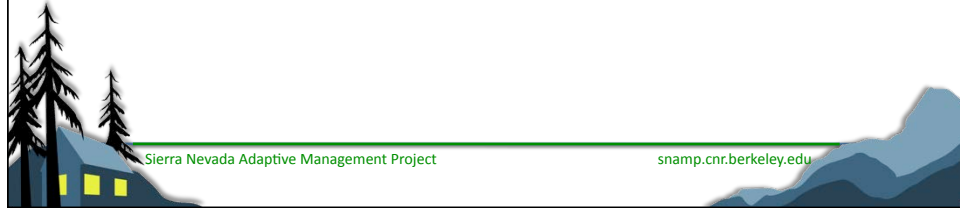
- Budget - USFS: \$1.1M ; reallocation of team budgets to support Spatial and Water, currently funded by DWR
- Limited post-treatment data collection at both sites for 1-2 years, depending on when treatments are completed. Serious gaps in SNAMP project goals.
- SNAMP finishes in December 2014, regardless of treatment completion

*Note: this scenario included primarily for purposes of comparison; achieving SNAMP goals probably not feasible under this scenario*

SNAMP scenarios				
Scenario	Budget	Post-tx time	SNAMP finishes	Notes
<b>1:</b> Continuation of 2010	100%: \$1.8M/year USFS: ~\$1.5M DWR: \$300K	1 yr ecosystem rest ; 2 years data collection	2015+	Budget situation precludes
<b>2:</b> Current 2010	86%: \$1.4M USFS: ~\$1.1M DWR: \$300K	1-2 years data collection	Dec 2014	
<b>3-1:</b> No DWR \$ finish in 2012	~61%: \$1.1M/year USFS: ~\$1.1M DWR: \$0	0-1 years data collection	Dec 2012	No close of AM loop
<b>3-2:</b> No DWR \$ focus on Last Chance	~61%: \$1.1M/year USFS: ~\$1.1M DWR: \$0	2 years data collection, Last Chance only	Dec 2014	Most teams at only 1 site, Last Chance
<b>3-3:</b> No DWR \$ redistribute funding among teams and work at both sites	~61%: \$1.1M/year USFS: ~\$1.1M DWR: \$0	1-2 years data collection	Dec 2014	probably can't achieve SNAMP goals



## Open Discussion

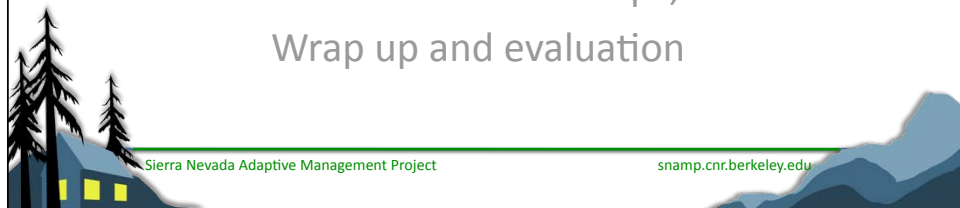


Sierra Nevada Adaptive Management Project

[snamp.cnr.berkeley.edu](http://snamp.cnr.berkeley.edu)

## Next steps/Evaluation

Recommendations from participants  
for SNAMP next steps;  
Wrap up and evaluation

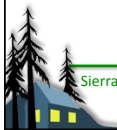


Sierra Nevada Adaptive Management Project

[snamp.cnr.berkeley.edu](http://snamp.cnr.berkeley.edu)



**THANK YOU!**



Sierra Nevada Adaptive Management Project

[snamp.cnr.berkeley.edu](http://snamp.cnr.berkeley.edu)